

TYPE RCO 444 R



Module Incremental Encoder

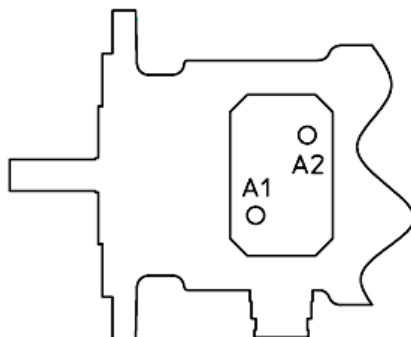
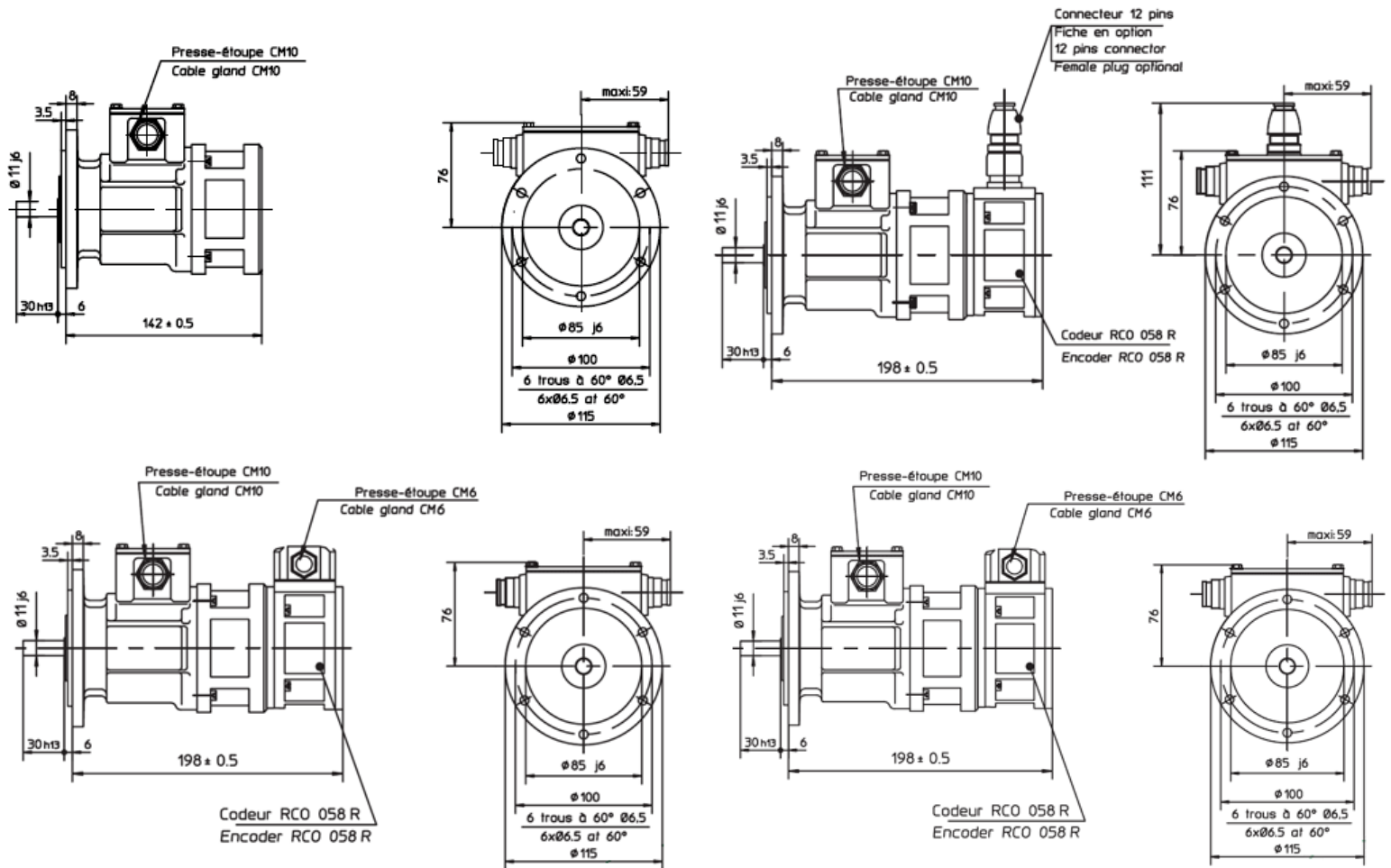
DESIGNATION	VALUE	
Counts calibration tolerance	$\pm 1 \%$	
Linearity tolerance	$\leq 0,15 \%$	
Superimposed ripple (peak to peak)	$\leq 0,5 \%$	
Temperature coefficient at no load	$0,005 \%$ / °C	
Time constant	2,5 ms	
Driving torque at no-load	1,5 N.cm	
Moment of inertia	0,950 kg/cm ²	
Radial shaft load (for signal accuracy)	Max 10 N	
Vibration proof	10 g / (10- 2000 Hz)	
Shock proof	30 g (18 ms)	
Temperature range	-30 °C - +130 °C	
Isolation class	B IEC 34-1	

Protection degree	IP 54 – IEC 34-5	
Climatic protection	IEC 68, 1, Ca	
Weight	2,8 kg.	

We reserve the right to modify technical features in the interest of technological advance.

General Characteristics

- Robust DC Tachogenerator module, severe applications
- More compact solution than other classical combinations
- High signal accuracy



Markings and polarity of terminals
for counter-clockwise rotation
viewing the mounting face :

A1 : +

A2 : -

For clockwise rotation, inversed polarity

e.m.f. [mV/min ⁻¹]	No-load voltage [V/min ⁻¹]	Max speed. [min ⁻¹]	Armature resistance Ω	Max. thermal load [A]
20	0,02	12000	12	0,55
50	0,05	12000	70	0,22
60	0,06	10000	100	0,18

